



BRITISH
PROPERTY
AWARDS

2018
★ ★ ★ ★ ★

GOLD WINNER

ESTATE AGENT
IN STAMFORD

nest
ESTATES



Billingborough Road, Horbling

Sleaford, NG34 0PA

Offers in Excess of £460,000

SUMMARY

- Three Bedroom Detached Bungalow
- 2 Acres Of Land & Stables
- Living Room With Log Burner
- Family Bathroom & Separate WC
- Kitchen
- Lovely Village Location





***** 2 ACRES OF LAND WITH STABLES *** THREE BEDROOM DETACHED BUNGALOW *****

Offered for sale is this very unique opportunity to purchase a three bedroom detached bungalow with 2 acres of land and stables.

The property is situated in the lovely village of Billingborough and its local amenities. The bungalow comprises; Utility Room, Kitchen Dining Room, Family Bathroom, Separate WC, Three Double Bedrooms, Living Room with log burner and front and side garden space with a stream running alongside.

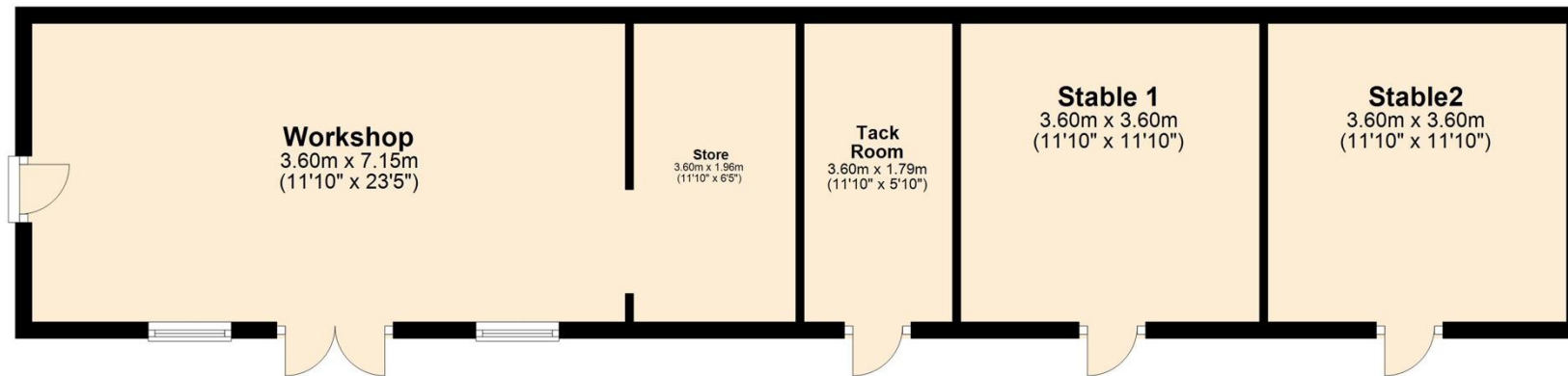
The rest of the offering comprises; Stables and 2 acres of land with varying different fenced off paddocks.

The lovely village of Billingborough offer numerous amenities, including a public house, primary school, fish and chip shop, three convenience stores, plenty of dog walks, tennis courts, children's play park and sports field.



Ground Floor

Approx. 66.6 sq. metres (716.6 sq. feet)



Total area: approx. 66.6 sq. metres (716.6 sq. feet)

Tenure: **Freehold**

EPC Rating: **E**

Council Tax Band: **D**

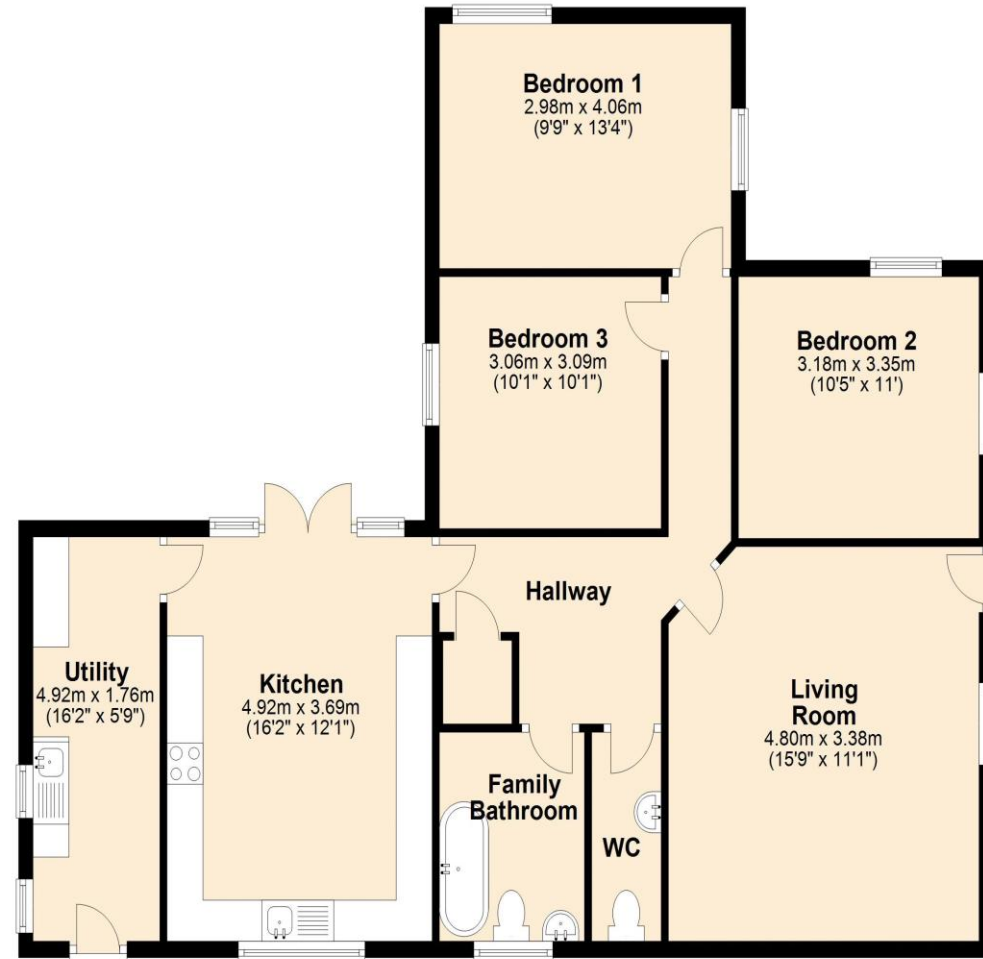
Local Authority: **SKDC**

Services: **Electric Storage Heaters**

DISCLAIMER

Money Laundering Regulation: People who intend to purchase will be asked to show us documents to prove their identity. This will allow us to agree the sale and move forward with your purchase as quickly as possible. 2. We do our best to make sure our sales particulars are as accurate and reliable as we can. However, they are a general guide to the property and if something is particularly important to you, we will be happy to check information for you. As regards measurements, the approximate room sizes are intended as a general guide. You must verify dimensions of rooms yourself before ordering any carpets or furniture. 3. As regards services, we have not tested the services or any equipment including appliances in this property. We advise prospective buyers to carry out their own survey, service report before making their final offer to purchase. 4. This sales information has been issued in good faith. However, it does not constitute representation of fact or form part of any offer or contract. The information referred to in these particulars should be independently verified by any prospective buyer or tenant. Neither Nest Estates nor any of its employees has the authority to make or give any representation or warranty whatever in relation to this property.

Ground Floor
Approx. 100.9 sq. metres (1086.3 sq. feet)



Total area: approx. 100.9 sq. metres (1086.3 sq. feet)